



📍 4 High Street, Box, Corsham, Wiltshire, SN13 8NB

🏠 Price Guide £400,000

Sold with no onward chain and located in the delightful village of Box, we are pleased to offer for sale this 3 bedroom Victorian style terrace home with large garden.

- 3 Bedroom Victorian Terrace Home
- Open Plan To The Downstairs
- Village Location
- Rear Garden And Further Large Detached Garden
- Sold With No Onward Chain
- Off Road Parking For One Car

🏡 Freehold

🏠 EPC Rating C



Sold with no onward chain and located in the delightful village of Box, we are pleased to offer for sale this 3 bedroom Victorian style terrace home with large garden. Situated on the High Street, the property is approached via steps to the front door into the main hallway. This is laid to engineered oak flooring and has stairs to the first floor and a door to the downstairs living area. The original layout of the house was a living room and separate dining room. The property now has one through living area separated by an arch. The living room is to the front and has a window to the High Street, a feature fireplace with inset log burner whilst the sizeable dining area is complimented by being open plan to the kitchen making this a large social area. The kitchen itself has a number of Shaker style wall and base units and built in appliances which include a fridge freezer, double oven, dishwasher and washing machine. A breakfast bar separates the dining area which has a door to the cloakroom with wall mounted boiler, a door leading to the garden and tiled flooring continued from the kitchen. Off the first floor landing are two of the bedrooms, both double, the main being to the front with a large window. A staircase with paddle steps leads to the top floor landing with sky light and eaves storage and a door to the third bedroom. This room has a sky light to the rear and further eaves storage. The property is double glazed throughout and warmed by a mains gas fired heating system. Externally their a small front garden and the rear is private and enclosed by fencing, laid to patio with a large shed/workshop/office with power and light. Through a gate at the end of the garden, a path leads to the off road parking for one car and access to the detached garden. Steps lead to a path at the bottom which leads to the stream at the bottom of the garden. The path runs to the left hand side of the garden which is laid to lawn with established bushes and shrubs.

Situation

This sought-after village is superbly well situated for access to Bath & Corsham with village amenities including an excellent primary school, village hall with library, Budgens, pharmacy, choice of cafes, church, pub, post office/store, curry house, doctor's surgery & the excellent "Rec" – an impressive open space resource with cricket, football, bowling club, tennis courts & playground. Corsham is located close by and caters for most day-to-day needs with a range of national and bespoke shops, coffee houses, boutiques, restaurants, and a variety of public houses. There are very good Primary and Secondary schools and the new Corsham Leisure Centre. Communications are excellent: Bath, Bristol and Swindon are all within easy motoring distance; there are fast road links to London and the West Country via the M4 motorway (J17 and 18 approximately 15 - 20 minutes away); and main line rail services are available from either Bath or Chippenham to Bristol Temple Meads and London Paddington.

Council Tax Band: D

Property information

E.P.C Rating: C

Mains Services

Freehold

No Onward Chain

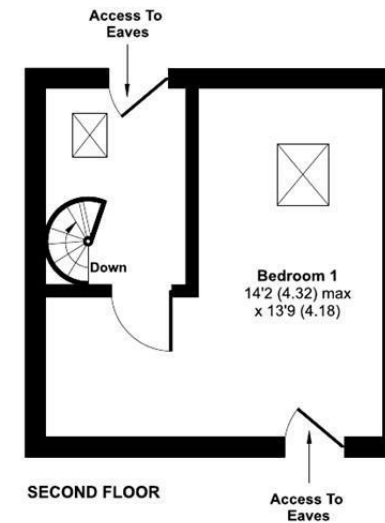
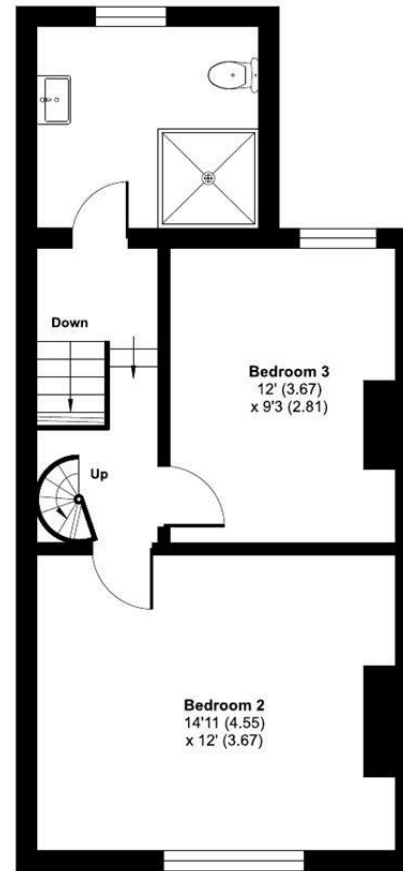
Council Tax Band C



High Street, Box, Corsham, SN13

Approximate Area = 1170 sq ft / 108.6 sq m

For identification only - Not to scale



Floor plan produced in accordance with RICS Property Measurement 2nd Edition, Incorporating International Property Measurement Standards (IPMS2 Residential). © nichecom 2025. Produced for Strakers. REF: 1357136

Disclaimer These particulars, whilst believed to be accurate are set out as a general outline only for guidance and do not constitute any part of an offer or contract. Intending purchasers should not rely on them as statements of representation of fact, but must satisfy themselves by inspection or otherwise as to their accuracy. No person in this firm's employment has the authority to make or give any representation or warranty in respect of the property. All measurements and distances are approximate only. Your home is at risk if you do not keep up repayments on a mortgage or other loan secured on it.